

CCUS GOM

Legacy Data. Powered by Machine Learning.

CCUS GoM is an extensive (31,197 km²) subsurface study identifying Carbon Storage capacity and ranking of key prospects in protraction areas of the US Gulf of Mexico. The study utilizes 3D and 2D legacy volumes and incorporates data from up to 4,137 wells. The products are available from Q1 2023.

Please contact us to inquire:

Robert Sorley

President, Geoex MCG LLC
robert.sorley@geoexmcg.com
+1 (281) 888 1535

Learn more at www.geoexmcg.com



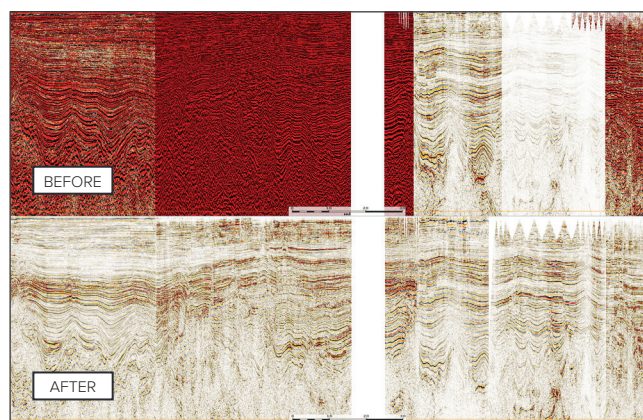
Geoex MCG

MACHINE LEARNING WORKFLOW



Data Conditioning

1. Assess public domain data for internal inconsistencies
2. Extract wavelets to compare survey quality
3. Select reference survey
4. Bulk scale matching to reference survey
5. Mistie to correct for time shift
6. Time matching using gain pairs
7. True amplitude frequency equalization
8. Phase and wavelet matching



Deliverables

#	Description
1	Study Area Outline
2	Unassigned Fault Pick (TWT)
3	Horizon Mapping (TWT)
4	Isochron Mapping (TWT)
5	Interpretation of Tectonostratigraphic Evolution
6	Predominant-Lithology Framework at Key Wells
7	Regional Structural Cross-Sections Through Key Wells
8	Predominant-Lithology Cross-Sections Through Key Wells
9	Review of Digital Data Distribution, Selection of Key Wells

#	Description
10	Petrophysical Analysis in Key Wells
11	Volumetric Capacity and Screening Economics by Lead
12	Top Seal Risk Analysis for Most Prospective Reservoirs
13	Summary Documentation
14	Digital Deliverables as Fundamentals Files from BOEM
15	Navigation Data
16	Raw Digital Well Data (BOEM)
17	Digital Kingdom Project
18	Project in Non-Kingdom Software